

The art of handling air

Type DUK



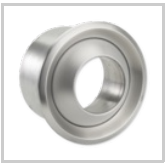
FOR INSTALLATION INTO WALLS AND ONTO RECTANGULAR AND CIRCULAR DUCTS, ADJUSTABLE AND FIXED – MADE OF ALUMINIUM

Adjustable and fixed jet nozzles achieve long throw distances and have excellent acoustic properties

- Nominal sizes: 100, 125, 160, 200, 250, 315 and 400 mm
- Volume flow rate range: 15 to 400 l/s or 54 to 1440 m³/h
- Visible parts made of aluminium
- For variable and constant volume flows
- Low sound power levels due to aerodynamically optimised nozzle contours
- Discharge angle can be adjusted manually or with an actuator
- Quick and easy to fix, concealed fixing

Optional equipment and accessories

- Exposed surface in RAL CLASSIC colours
- Circular spigot
- Connection pieces for circular and rectangular ducts
- Internal or external actuators for adjusting the discharge angle



Application

- Type DUK jet nozzles for supply air discharge, with a long throw distance
- For production halls, gymnasiums, theatres and conference rooms as well as for large internal spaces in airports, railway stations and shopping centres
- Attractive design element for building owners and architects with demanding aesthetic requirements
- For supply air to room air temperature differences from -12 to $+20$ K
- Adjustable discharge angle, from -30 to $+30^\circ$, for switching between heating and cooling mode
- For push fitting directly onto circular ducts or as a branch off circular or rectangular ducts; also for installation into walls and bulkheads

Special characteristics

- High discharge momentum, hence large penetration depth in heating mode
- Optimised nozzle contours
- Fixed and adjustable variants
- Discharge angle can be adjusted from -30° to $+30^\circ$, either manually or with an actuator
- Electric actuator as an option

Nominal sizes

- 100, 125, 160, 200, 250, 315, 400 mm

From nominal size 160 with actuator

Variants

- F: Fixed jet nozzle
- V: Adjustable jet nozzle

Connection

- V-A: For circular ducts (direct connection)
- V-K: For rectangular ducts
- V-R: For circular ducts

Actuator

- Manual adjustment
- E*: Internal or external electric actuator

Parts and characteristics

- Nozzle with acoustically optimised contours

Useful additions

The art of handling air

- TDC temperature difference control module

Construction features

- Spigot (optional) suitable for circular ducts to EN 1506 or EN 13180.

Materials and surfaces

Fixed

- Nozzle made of aluminium
- Untreated surface

Adjustable

- Nozzle and face cover ring made of aluminium
- Spherical nozzle casing ring, casing, saddle connector and spigot made of galvanised sheet steel
- Spherical nozzle casing made of plastic, UL 94, V-0, flame retardant, heat resistant up to 50 °C
- Nozzle and face cover ring untreated
- Spherical nozzle casing similar to RAL 9010, white
- P0: Nozzle and face cover ring powder-coated RAL 9010, pure white
- P1: Nozzle and face cover ring powder-coated, RAL CLASSIC colour

Standards and guidelines

- Sound power level of the air-regenerated noise measured according to EN ISO 5135

Maintenance

- Maintenance-free as construction and materials are not subject to wear
- Inspection and cleaning to VDI 6022

The art of handling air

TROX Australia Pty Ltd



TROX Australia Pty Ltd
Level 32
101 Miller Street
North Sydney 2060
New South Wales, Australia.

Telephone number +61 2 8923 2551

Online-Services

- > [Your contact partner](#)
-
- > [Locations Australia](#)
-

Service-Hotlines

Main Office and Factory Number

Tel: +61 (02) 8923 2551

[Management APO](#)

[TROX IN SOCIAL WEB](#)
