

REFERENCES

| Application range | Type | Continent Country |
|-------------------|----------------------|---------------------|
| | Installation example | Europe Germany |



Installation example VDW

[Detail view](#)

| Application range | Type | Continent Country |
|-------------------|-----------|-----------------------|
| Arenas | Reference | Africa South Africa |



Moses Mabhida Stadium - Durban

In Durban on the east coast of South Africa, the new, futuristic Moses Mabhida Stadium is currently being built for the 2010 Football World Cup.

[Detail view](#)

| Application range | Type | Continent Country |
|-------------------|-----------|---------------------|
| Arenas | Reference | Asia China |

Olympics 2008 - Peking (China)

For the Olympic Games 2008 in Peking, many fascinating buildings were constructed such as the National Stadium, also called "Birds Nest", or the National Swimming Center, also known as "Water Cube"

[Detail view](#)

| Application range | Type | Continent Country |
|-------------------|-----------|---------------------|
| Office | Reference | Europe Germany |

Post Tower - Bonn

The Post Tower in Bonn, at 163 m, is the highest office building in North Rhine-Westphalia. This elliptical building is equipped with a cavity facade.

[Detail view](#)

| | | |
|-------------------|-----------|---------------------|
| Application range | Type | Continent Country |
| Office | Reference | Europe Germany |

Neckermann computing centre

The planned repurposing of the computing centre of Neckermann Versand AG, built in the 70's with a concrete-skeleton design, raised the question of technically and economically optimal air conditioning.

Detail view

| | | |
|-------------------|-----------|---------------------|
| Application range | Type | Continent Country |
| Hotel | Reference | Euroasia Russia |

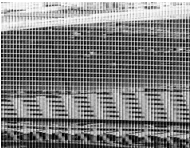


Ritz-Carlton Moscow

The Ritz-Carlton luxury hotels lies in the direct vicinity of Red Square on Tverskaya Street, the main boulevard in this part of Moscow.

Detail view

| | | |
|-------------------|-----------|-----------------------------|
| Application range | Type | Continent Country |
| Hotel | Reference | Asia United Arab Emirates |



Jumeirah Beach Resort - Dubai (UAE)

The extravagant architecture of the 5-star Jumeirah Beach Resort opened in 1999 creates an impression at first sight. Modelled on a surging billow, this first-class hotel is captivating with its lively and luxurious charm

Detail view

| | | |
|-------------------|-----------|---------------------|
| Application range | Type | Continent Country |
| Arenas | Reference | Europe Poland |



Municipal Stadium - Wroclaw (Poland)

The Municipal Stadium in Wraclaw was opened in September 2011 not with a football match but the WBC heavyweight boxing fight between the Ukrainian world champion Vitali Klitschko and the Polish challenger Tomasz Adamek.

Detail view

| | | |
|-------------------|-----------|------------------------|
| Application range | Type | Continent Country |
| Hotel | Reference | South America Brazil |



Hilton - Sao Paulo Morumbi

In the eastern part of Sao Paulo, in the Morumbi neighborhood, is one of the largest mixed business/residential areas in Brazil.

Detail view

| | | |
|-------------------|-----------|---------------------|
| Application range | Type | Continent Country |
| Arenas | Reference | Europe Ukraine |

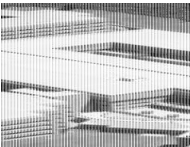


Donbass Arena - Donetsk

The Donbass Arena in Donetsk was equipped with leading-edge network infrastructure and ornate glass facade. A unique feature of the stadium is the world's largest "floating" granite football made of several black and light-coloured rocks.

Detail view

| | | |
|-------------------|-----------|-----------------------|
| Application range | Type | Continent Country |
| Hospitals | Reference | Africa South Africa |



Albert Luthuli Hospital - Durban

The Inkosi Albert Luthuli hospital, located at the outskirts of the city of Durban, South Africa, is the largest and most modern hospital in southern Africa.

Detail view

| | | |
|-------------------|-----------|---------------------|
| Application range | Type | Continent Country |
| Arenas | Reference | Europe Ukraine |



Arena-Lviv - Lviv (Ukraine)

The venue in Lviv was the last of the Ukrainian EURO 2012 stadiums to be inaugurated. The first football match was played on 15 November 2011 between the Ukraine and Austria.

Detail view

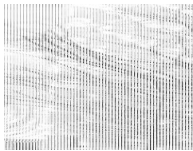
| Application range | Type | Continent Country |
|-------------------|-----------|---------------------|
| Office | Reference | |

Chambre de Commerce

For the urban development zone in Luxembourg known as Plateau de Kirchberg, a challenge was sent out to architects around the world to help design the Luxemburg of the future.

[Detail view](#)

| Application range | Type | Continent Country |
|-------------------|-----------|---------------------|
| Office | Reference | Europe Spain |



Distrito de la Comunicación de Telefónica - Las Tablas (Espagne)

In the area of Las Tablas, to the north of Madrid, the Telefónica Group is building an important complex of offices and services in which they will regroup more than 14,000 employees.

[Detail view](#)

| Application range | Type | Continent Country |
|-------------------|-----------|---------------------|
| Arenas | Reference | Europe Poland |

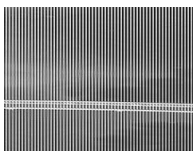


PGE Arena - Gdansk (Poland)

The PGE Arena Gdansk is a multi-functional stadium that was built specifically for the European Football Championship 2012.

[Detail view](#)

| Application range | Type | Continent Country |
|-------------------|-----------|-----------------------------|
| Hotel | Reference | Asia United Arab Emirates |



Burj al Arab - Dubai (United Arab Emirates)

The tallest and perhaps most luxurious hotel in the world is located in an unparalleled setting on an artificial island only about 280 meters from the mainland.

[Detail view](#)

Application range

Arenas

Type

Reference

Continent | Country

Europe | Poland



National Stadium - Warsaw (Poland)

In the Polish capital of Warsaw, the old "10th-Anniversary Stadium" was demolished and a new multi-functional stadium built especially for the 2012 European Championship. The stadium is located on the banks of the Vistula, in the district of Praga, directly opposite the centre of Warsaw.

[Detail view](#)

Application range

Arenas

Type

Reference

Continent | Country



Centre National Sportif et Culturel (Luxembourg)

The Centre National Sportif et Culturel in Luxemburg was built on the Kirchberg Plateau on an area of over 13,000 hectares of land.

[Detail view](#)

Application range

Arenas

Type

Reference

Continent | Country

Europe | Ukraine



Olympic Stadium - Kiev (Ukraine)

The Olympic Stadium in Kiev will host the final match in the European Football Championship 2012. In the run-up to the EURO 2012, the stadium was completely refurbished.

[Detail view](#)

Application range

Arenas

Type

Reference

Continent | Country

Europe | Poland



Municipal Stadium - Poznan

The Municipal Stadium in Poznan is close to the town centre and was built in 1968. It was actually completed only twelve years later and opened in August 1980 with a match played by the home team Lech Posen.

[Detail view](#)

load more references